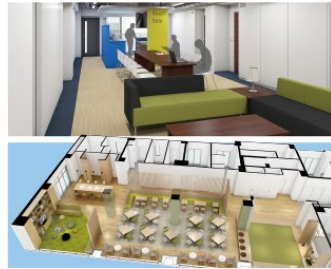


Tokyo City University International Dormitory

Tokyo City University International Dormitory was newly opened in 2019 in order to cultivate human resources who can play an active role globally while developing the ability to understand different cultures by living together with international students and Japanese students. We hope that students with diversity gathered from all around the world will have a valuable place to deepen mutual understanding and form a good friendship.



Overview

●Address

1-25-7 Tamazutsumi, Setagaya ward, Tokyo

●Transportation

13 min. walk to the nearest railway station “Oyamadai” of Tokyu Oimachi Line

3 min. walk to “Setagaya Campus”, Main Campus of Tokyo City Univ.

●Building

Four Story Reinforced Concrete Structure, 1F Public Space, 2F Male students Floor (18 rooms) , 3F Mixed Floor (18 rooms) , 4F Female Students Floor (14rooms)

Common Facilities

●24 hours Security (Resident Dormitory Manager), Authentication check with card key at dormitory entrance and each floor

●Television, Internet (Wi-Fi), Coin Laundry, Kitchen, Cooking Appliances (Micro wave, Rice cooker, Toaster, etc.), Bicycle Parking Space, Vacuum Cleaner, Ironing Equipment

Cost of Dormitory

●Down payment at entry: **58,000 Yen**

●Monthly Payment: **58,000 Yen per Month**

●Utility cost (electricity, water, Wi-Fi) NOT included : approx. 5,000 Yen per month

Daily Life and Estimated cost of living

●Supermarket and Convenience Store within a few minutes

●Meals: approx.1,000-1,500 Yen per day (including 300-500 Yen for a Lunch at Univ. Cafeteria)

●Transportation: 210 Yen per time for a bus ride, 200 Yen for a railway to Center City (ex. Shibuya)

Individual Room

●Area 14.49 m² per room, 50 rooms in total

●Furnished with a single bed, a desk, a chair, a bookshelf, a refrigerator, a closet with chests, a shoe case, curtain, a unit bathroom and air-conditioner.